

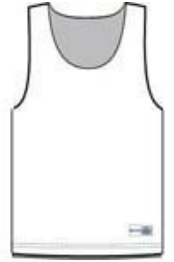


Extremely smooth and moisture-wicking windowpane mesh feels great against the skin while the unrestricted cuts allows complete freedom of movement. PosiCharge technology ensures enduring color.

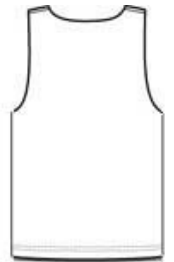
- 3.2-ounce, 100% cationic polyester mesh
- White mesh reverse
- Double-layer construction with open, individually hemmed layers for easy decoration
- Tag at hem on color side

**CARE INSTRUCTIONS**

Machine wash cold with like colors, do not use bleach, do not use fabric softener, tumble dry low, remove promptly, cool iron if needed, do not dry clean.

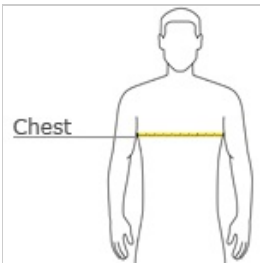


front



back

**HOW TO MEASURE**



**CHEST**

With arms down at sides, measure around the upper body, under arms and over the fullest part of the chest.

**SIZE CHART**

	XS	S	M	L	XL
Size	4	6/8	10/12	14/16	18/20
Chest	25-26	26-28	28-30	30-32	32-35

**COLOR INFORMATION**



Black  
PMS 433 C



Carolina Blue  
PMS 646 C



Forest Green  
PMS 5605 C



Maroon  
PMS 504 C



Purple  
PMS 7672 C



True Navy  
PMS 533 C



True Red  
PMS 200 C



True Royal  
PMS 7687 C