

Port Authority® Ladies Hooded Essential Jacket L305



Our Essential Jacket is a go-to lightweight jacket. With simple, classic styling, this unlined jacket shields you from breezes and drizzle and it's easy to stuff into a backpack or bag when the sun comes out.

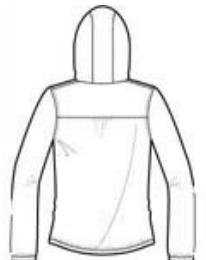
- 100% polyester
- Hood with self-fabric drawcord and metal eyelets
- Gathers at shoulders and center back
- Locker loop
- Dyed-to-match zipper
- Front pockets
- Spandex binding at cuffs and hem

CARE INSTRUCTIONS

Machine wash cold gentle cycle with like colors, use mild detergent, remove immediately, do not allow to lay on itself when wet, do not bleach, tumble dry low, cool iron if needed, do not dry clean.



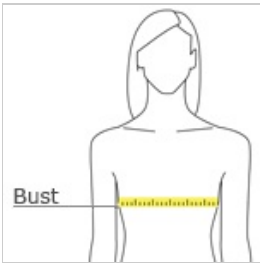
front



back

[Tips For Effectively Screen Printing Polyester Fabrics](#)

HOW TO MEASURE









BUST

With arms down at sides, measure around the upper body, under arms and around the fullest part of the bust.

SIZE CHART

	XS	S	M	L	XL	XXL	3XL	4XL
Size	2	4/6	8/10	12/14	16/18	20/22	24/26	28/30
Bust	32-34	35-36	37-38	39-41	42-44	45-47	48-51	52-55

COLOR INFORMATION

					
Black PMS 426 C	Charity Pink PMS 76 34 C	Caret Red PMS 1955 C	Green Oasis PMS 367 C	Mediterranean Blue PMS 7673 C	True Navy PMS 533 C